



VPS Active Speaker Set

Ref. nr.: 178.130; 178.135



INSTRUCTION MANUAL
GEBRUIKSAANWIJZING
GEBRAUCHSANLEITUNG
MANUAL DE INSTRUCCIONES
MANUEL D'INSTRUCTIONS

ENGLISH

Congratulations to the purchase of this Vonyx product. Please read this manual thoroughly prior to using the product in order to benefit fully from all features.

Read the manual prior to using the product. Follow the instructions in order not to invalidate the warranty. Take all precautions to avoid fire and/or electrical shock. Repairs must only be carried out by a qualified technician in order to avoid electrical shock. Keep the manual for future reference.

- Prior to using the product, please ask advice from a specialist. When the product is switched on for the first time, some smell may occur. This is normal and will disappear after a while.
- The product contains voltage carrying parts. Therefore do NOT open the housing.
- Do not place metal objects or pour liquids into the product. This may cause electrical shock and malfunction.
- Do not place the product near heat sources such as radiators, etc. Do not place the product on a vibrating surface. Do not cover the ventilation holes.
- The product is not suitable for continuous use.
- Be careful with the mains lead and do not damage it. A faulty or damaged mains lead can cause electrical shock and malfunction.
- When unplugging the product from a mains outlet, always pull the plug, never the lead.
- Do not plug or unplug the product with wet hands.
- If the plug and/or the mains lead are damaged, they need to be replaced by a qualified technician.
- If the product is damaged to such an extent that internal parts are visible, do NOT plug the product into a mains outlet and DO NOT switch the unit on. Contact your dealer. Do NOT connect the product to a rheostat or dimmer.
- To avoid fire and shock hazard, do not expose the product to rain and moisture.
- All repairs should be carried out by a qualified technician only.
- Connect the product to an earthed mains outlet (220-240Vac/50Hz) protected by a 10-16A fuse.
- During a thunderstorm or if the product will not be used for a longer period of time, unplug it from the mains. The rule is: Unplug it from the mains when not in use.
- If the product has not been used for a longer period of time, condensation may occur. Let the unit reach room temperature before you switch it on. Never use the product in humid rooms or outdoors.
- To prevent accidents in companies, you must follow the applicable guide lines and follow the instructions.
- Do not repeatedly switch the product on and off. This shortens the life time.
- Keep the product out of the reach of children. Do not leave the product unattended.
- Do not use cleaning sprays to clean switches. The residues of these sprays cause deposits of dust and grease. In case of malfunction, always seek advice from a specialist.
- Do not force the controls.
- If this product is with speaker inside which can cause magnetic field. Keep the product at least 60cm away from computer or TV.
- If this product have a built-in lead-acid rechargeable battery. Please recharge the battery every 3 months if you are not going to use the product for a long period of time. Otherwise the battery may be permanently damaged.
- If the battery is damaged please replace with same specifications battery. And dispose the damaged battery environment friendly.
- If the product has fallen, always have it checked by a qualified technician before you switch the product on again.
- Do not use chemicals to clean the unit. They damage the varnish. Only clean the product with a dry cloth.
- Keep away from electronic equipment that may cause interference.
- Only use original spares for repairs, otherwise serious damage and/or dangerous radiation may occur.
- Switch the product off prior to unplugging it from the mains and/or other equipment. Unplug all leads and cables prior to moving the product.
- Make sure that the mains lead cannot be damaged when people walk on it. Check the mains lead before every use for damages and faults!
- The mains voltage is 220-240Vac/50Hz. Check if power outlet match. If you travel, make sure that the mains voltage of the country is suitable for this product.
- Keep the original packing material so that you can transport the product in safe conditions.



This mark attracts the attention of the user to high voltages that are present inside the housing and that are of sufficient magnitude to cause a shock hazard.



This mark attracts the attention of the user to important instructions that are contained in the manual and that he should read and adhere to.

The product has been certified CE. It is prohibited to make any changes to the product. They would invalidate the CE certificate and their guarantee!

NOTE: To make sure that the product will function normally, it must be used in rooms with a temperature between 5°C/41°F and 35°C/95°F.



Electric products must not be put into household waste. Please bring them to a recycling centre. Ask your local authorities or your dealer about the way to proceed. The specifications are typical. The actual values can slightly change from one unit to the other. Specifications can be changed without prior notice.

Do not attempt to make any repairs yourself. This would invalid your warranty. Do not make any changes to the product. This would also invalid your warranty. The warranty is not applicable in case of accidents or damages caused by inappropriate use or disrespect of the warnings contained in this manual. Vonyx cannot be held responsible for personal injuries caused by a disrespect of the safety recommendations and warnings. This is also applicable to all damages in whatever form.

UNPACKING INSTRUCTION

CAUTION! Immediately upon receiving the product, carefully unpack the carton, check the contents to ensure that all parts are present, and have been received in good condition. Notify the shipper immediately and retain packing material for inspection if any parts appear damage from shipping or the package itself shows signs of mishandling. Save the package and all packing materials. In the event that the product must be returned to the factory, it is important that the product be returned in the original factory box and packing.

If the device has been exposed to drastic temperature fluctuation (e.g. after transportation), do not switch it on immediately. The arising condensation water might damage your device. Leave the device switched off until it has reached room temperature.

POWERSUPPLY

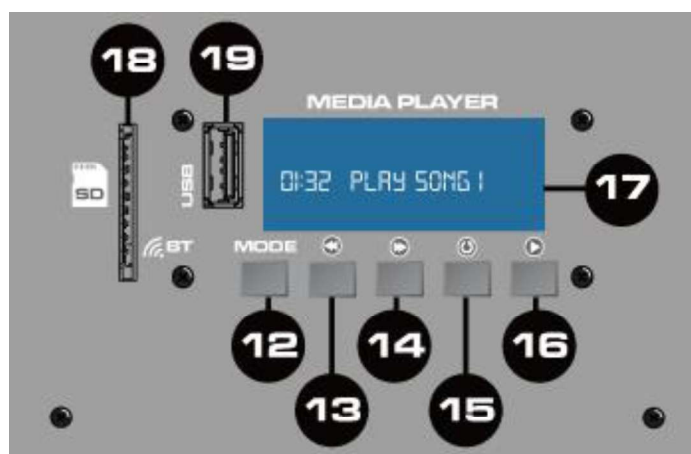
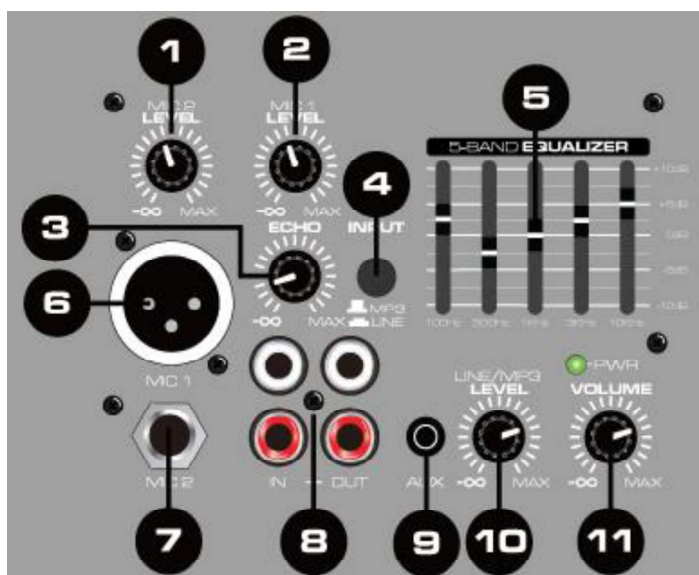
On the label on the backside of the product is indicated on this type of power supply must be connected. Check that the mains voltage corresponds to this, all other voltages than specified, the product be irreparably damaged. The product must also be directly connected to the mains and may be used. No dimmer or adjustable power supply.



Always connect the device to a protected circuit (circuit breaker or fuse). Make sure the device has an appropriate electrical ground to avoid the risk of electrocution or fire.

CONTROLS AND CONNECTIONS

1. **Microphone Level Channel 2**
Adjust the signal level of microphone channel 2.
2. **Microphone Level Channel 1**
Adjust the signal level of microphone channel 1.
3. **Microphone Echo**
Adjust the intensity of the echo effect.
4. **Input selector switch**
Selects the input signal:
 - Button not pressed: signal of media player.
 - Button pressed: signal of the line input.
5. **Equalizer**
5-band equalizer for the master signal. Adjust frequencies are 100Hz, 300Hz, 1kHz, 3kHz, 10kHz.
6. **Microphone Input Channel 1**
XLR input jack for connecting a microphone.
7. **Microphone Input Channel 2**
6.3mm 1/4" input jack for connecting a microphone.
8. **Line In-/ Output**
RCA jack in- and output for connecting audio units with line level output (e.g. mixer, CD player, tape recorder).
9. **AUX Input**
3.5mm jack input for connecting units with line level (e.g. CD/MP3/DVD player, hi-fi system, PC).
10. **Input selector switch**
Selects the input signal:
 - Button not pressed: signal of the line input.
 - Button pressed: signal of media player.
11. **Volume**
Adjust the overall output level of the portable sound system.
12. **Mode button**
Press the button to select BT/USB/SD function.
Press for 2 seconds to turn the mediaplayer on or off.
13. **Backward button**
Press key for select last title (short actuation) and decrease volume (long actuation).
14. **Forward button**
Press key for select next title (short actuation) and increase volume (long actuation).
15. **Repeat button**
Press key for repeating of single track or all tracks.
16. **Play button**
For switching between play and pause.
17. **LCD Display**
Display show you some information as playback support, file name, elapsed time, total time, file number, total file number, file and playback mode.



18. SD port

Connect your SD/MMC card in this slot to play music with MP3 or WMA format.

19. USB port

Connect your USB devices to this slot to play music with MP3 or WMA format.

20. Speaker Output (Active speaker)

Put the plug of speaker cable included into this connector and put the other plug of speaker cable into passive speaker (24).

21. LED Switch (Active speaker)

Turn on the LED (frontside) of the active speaker on/off.

22. Power Switch

Turn the power on/off.

23. Power input

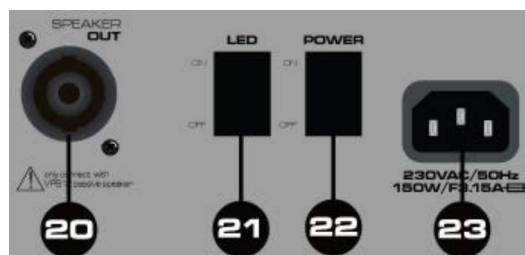
Before connecting the power cord, check if the mains corresponds to the voltage indicated on the rating plate on the unit. Connect the power cord only to a mains socket outlet with a protective earthing connection.

24. Speaker input (Passive Speaker)

Put the plug of speaker cable included into this connector and put the other plug of speaker cable into active speaker (20).

25. LED Switch (Passive Speaker)

Turn on the LED (frontside) of the passive speaker on or off.



CONNECT BT-DEVICE



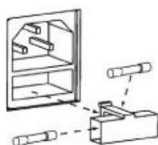
1. Set the search function on of the BT device you want to play the music. See the operating instructions for that device..
2. Press the "MODE" button until "AUX" will show in display and activate BT-function.
3. Find on your BT-device "VONYX" and make the connection.

If password is required, you can enter "0000".

REPLACING THE FUSE

If the fuse is defective, replace the fuse with a fuse of the same type and value. Before replacing the fuse, unplug mains lead.

Procedure:



- Step 1: Open the fuse holder on the rear panel with a fitting screwdriver.
- Step 2: Remove the old fuse from the fuse holder.
- Step 3: Install the new fuse in the fuse holder.
- Step 4: Replace the fuse holder in the housing.



tronios

Sound & Light

CE Declaration of Conformity

Manufacturer: Tronios B.V.
Bedrijvenpark Twente 415
7602KM Almelo
The Netherlands
Phone: +31(0)85-1053155

Product number: 178.130; 178.135

Product Description: VPS122A ActSpeakSet12"LED & Stands
VPS152A ActSpeakSet15"LED & Stands

Trade Name: VONYX

Regulatory Requirement: EN 60065: 2002+A1:2006+A12:2011
EN 55013: 2001/A2:2006
EN 55020: 2007/A11:2011
EN 61000-3-2/-3-3

I hereby declare that the product meets the requirements stated in Directives 2014/35/EU and 2014/30/EU and conforms to the above mentioned Declarations.

Almelo,
29-11-2017

Name : M. Velders

Signature :

Specifications and design are subject to change without prior notice..

www.tronios.com

Copyright © 2017 by TRONIOS the Netherlands